



IHH Healthcare

GENERAL SURGERY

Oncoplastic Breast Surgery

KEY PROCEDURE HIGHLIGHTS

1

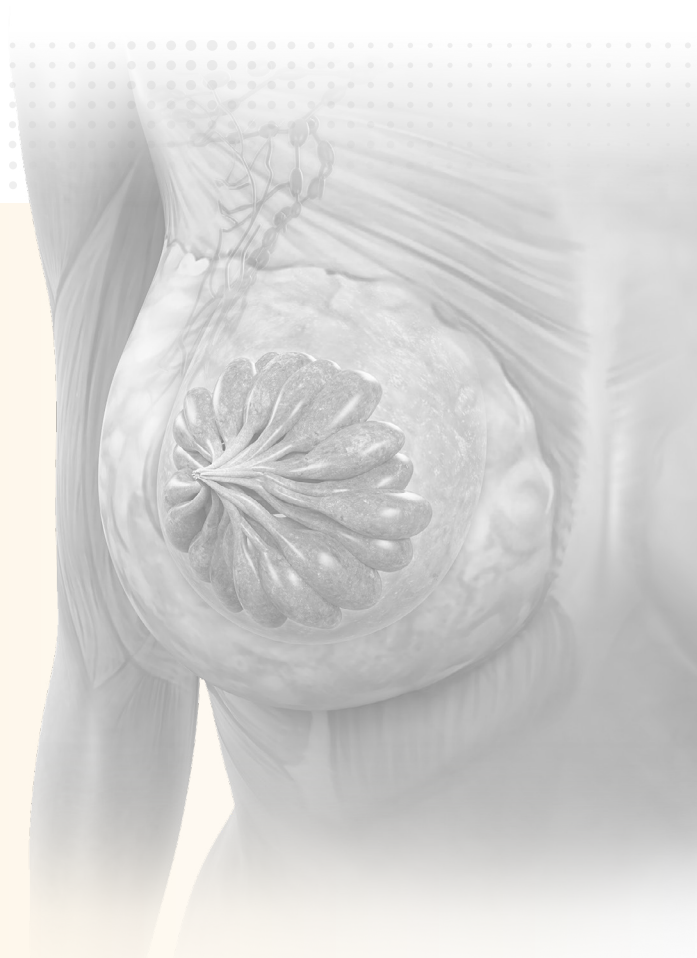
Optimise cancer clearance with generous excisions coupled with immediate reconstruction of the defect, reducing cancer-involved margins and deformities.

2

Avoid mastectomy in selected cases, allowing breast conservation without compromising cancer clearance or aesthetic outcome.¹

3

Preserve patients' body image and **improve their quality of life** with improved aesthetic outcome.^{1,3}



ONCOPLASTIC BREAST SURGERY

Surgery remains the main treatment for patients diagnosed with breast cancer.

Compared with traditional cancer resection (lumpectomy), oncoplastic breast surgery combines lumpectomy with established plastic surgery techniques (breast reconstruction) where the breast is reshaped to achieve an improved aesthetic outcome.

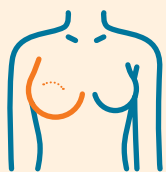
LUMPECTOMY

Remove cancer safely

ONCOPLASTIC BREAST SURGERY

BREAST RECONSTRUCTION

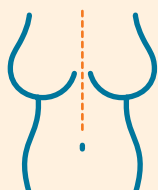
Preserve or improve breast appearance for optimal aesthetic results



Traditional Technique

Traditional lumpectomy used to excise a large tumour often leaves the breast with a **poor aesthetic outcome**.²

Deformities such as the loss of breast contour, puckered scars and deviations of the nipple may arise.

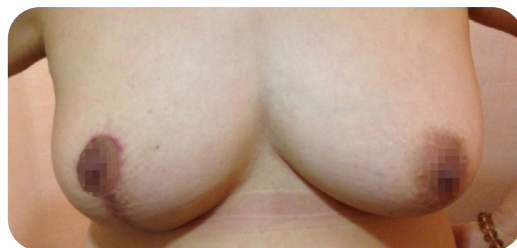


Oncoplastic Technique

Oncoplastic techniques **restore the natural appearance of the breast** despite optimal excision of a large diseased area and recreate symmetry.^{1,2}



Before Surgery: Cancer lump in right breast causing obvious breast asymmetry



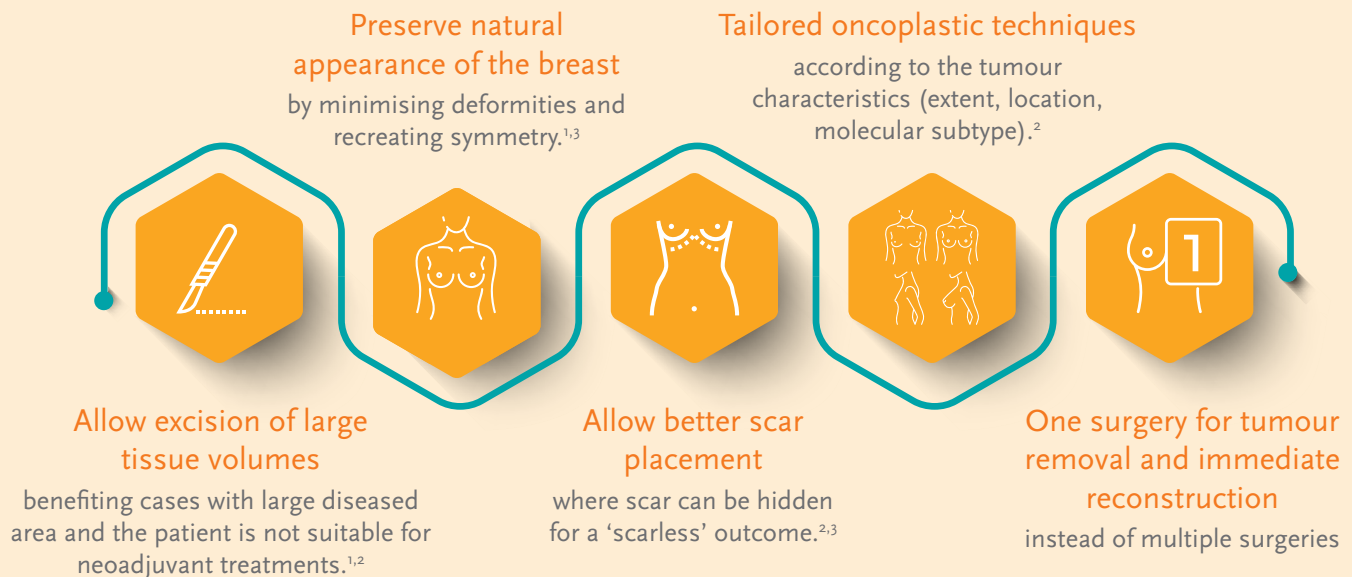
After Surgery: Reconstructed right breast with well-concealed scar and improved breast symmetry



Excised Tumour

BENEFITS OF ONCOPLASTIC BREAST SURGERY

Breast reconstruction done at the time of lumpectomy offers the following benefits:



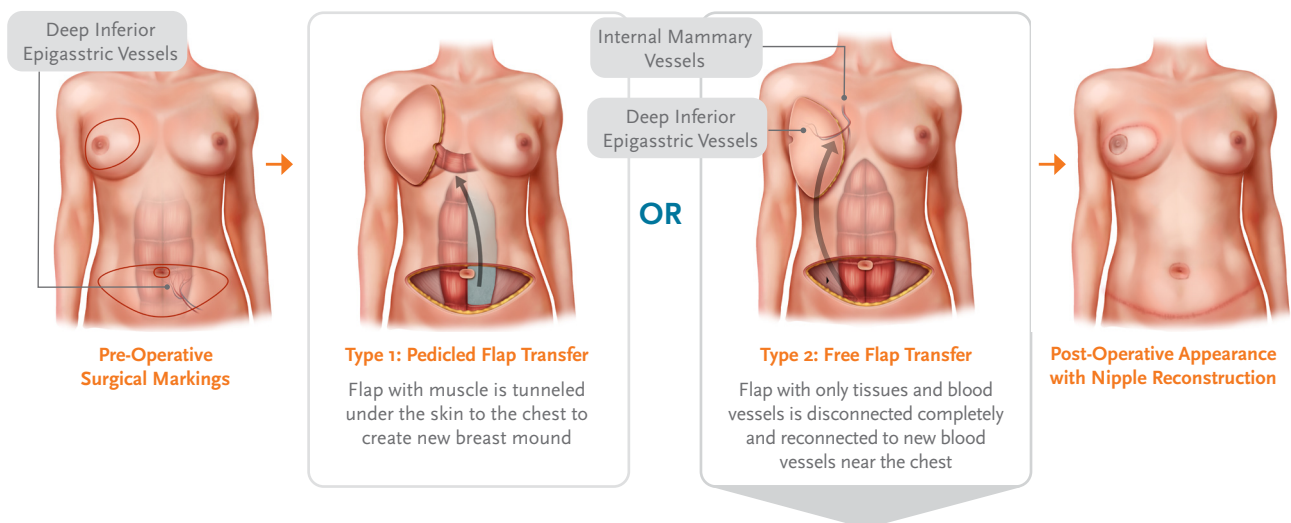
TOTAL BREAST RECONSTRUCTION

Total breast reconstruction is done to restore and sometimes enhance the appearance of a normal looking breast - the size, shape and symmetry of the breasts, when mastectomy is unavoidable.

During reconstruction, the plastic surgeon creates a breast shape by using either an artificial implant, or a flap of tissue from another part of the patient's body such as the abdomen, thigh or back (autologous reconstruction). In some cases, the plastic surgeon may combine the use of both artificial implants and autologous tissue.

Autologous Reconstruction

Autologous reconstructions are able to resemble the form of a pre-operative breast more closely, so they are considered the gold standard.⁵



A Newer Flap Surgery of Choice: The **Deep Inferior Epigastric Perforator (DIEP) Flap** uses only skin and fat, without sacrificing any muscle. Abdominal muscle is preserved with less donor site morbidity and the risk of abdominal bulge/hernia is decreased.⁶

Due to complexity of reattachment of the blood vessels, a free flap surgery

- Takes 6-8 hours to complete
- Requires an experienced plastic surgeon

PATIENT SELECTION

Oncoplastic breast surgery is suitable for patients with operable breast cancer and the following profiles:



Cancer in cosmetically sensitive areas that yield poor cosmetic outcomes with traditional lumpectomy*



Extensive cancer involvement within the breast that require large areas of excision

*Subject to doctor's evaluation

Total breast reconstruction is suitable for patients where mastectomy is unavoidable and is done at the same time as mastectomy.

Length of Stay

OBS

3 - 5 Days
(no ICU stay required)

With free flap surgery

5 - 7 Days
(including 1 day in HDU/ICU)

INNOVATIVE DIAGNOSTIC CAPABILITIES

At Parkway Hospitals Singapore, we constantly innovate to provide uncompromising standards of non-invasive, high quality medical imaging to increase diagnostic accuracy for patients.

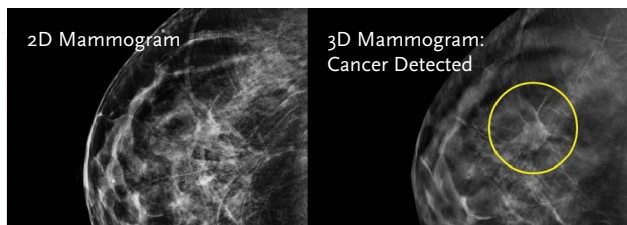


Image Credit : Hologic

3D Mammogram (Breast Tomosynthesis)

Our Mammomat Revelation digital mammography system produces tomosynthesis images with a wide-angle of 50 degrees, enabling more accurate and earlier detection of breast cancer. The system is able to reduce radiation dose by up to 30% without compromising image quality.

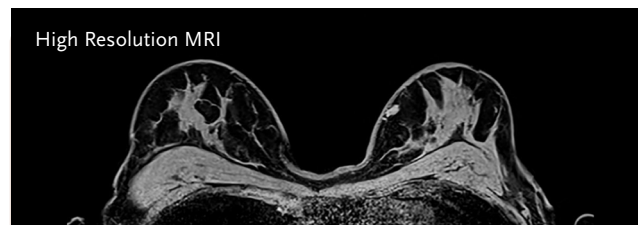


Image Credit : Siemens Healthineers

Magnetic Resonance Imaging (Breast MRI)

Magnetom Sola 1.5T MRI system is equipped with BioMatrix Technology which automatically adjusts to patient biovariability to overcome unwarranted variations in MRI examinations. This results in fewer rescans and better scan consistency.

REFERENCES

- Campbell EJ, Romics L. Oncological safety and cosmetic outcomes in oncoplastic breast conservation surgery, a review of the best level of evidence literature. *Breast Cancer: Targets and Therapy*. 2017;Volume 9:521-530. doi:10.2147/bctt.s113742
- Clough KB, Kaufman GJ, Nos C, Buccimazza I, Sarfati IM. Improving Breast Cancer Surgery: A Classification and Quadrant per Quadrant Atlas for Oncoplastic Surgery. *Annals of Surgical Oncology*. 2010;17(5):1375-1391. doi:10.1245/s10434-009-0792-y
- Tokun C, Weiss A, Wang-Rodriguez J, Blair SL. Oncologic Safety of Skin-Sparing and Nipple-Sparing Mastectomy: A Discussion and Review of the Literature. *International Journal of Surgical Oncology*. 2012;2012:1-8. doi:10.1155/2012/921821
- Soerjomataram I, Louwman MWJ, Ribot JG, Roukema JA, Coebergh JWW. An overview of prognostic factors for long-term survivors of breast cancer. *Breast Cancer Research and Treatment*. 2007;107(3):309-330. doi:10.1007/s10549-007-9556-1.
- Pompeo FSD, Longo B, Laporta R. Breast Reconstruction with Free Flaps. *Breast Cancer*. 2017;485-494. doi:10.1007/978-3-319-48848-6_37. [Italicise "Breast Cancer"]
- Treece PC, Allen RJ. Deep Inferior Epigastric Perforator Flap For Breast Reconstruction. *Southern Medical Journal*. 1993;86(Supplement):109. doi:10.1097/00007611-199309001-00310.



IHH Healthcare

IHH Healthcare has a global network of 83 hospitals and ancillary services in 10 countries.

As a patient at Gleneagles Hospital Singapore, Mount Elizabeth Hospital, Mount Elizabeth Novena Hospital and Parkway East Hospital, you enjoy easy access to a full spectrum of integrated healthcare services under the IHH Healthcare ecosystem.

For more information, contact us at:

